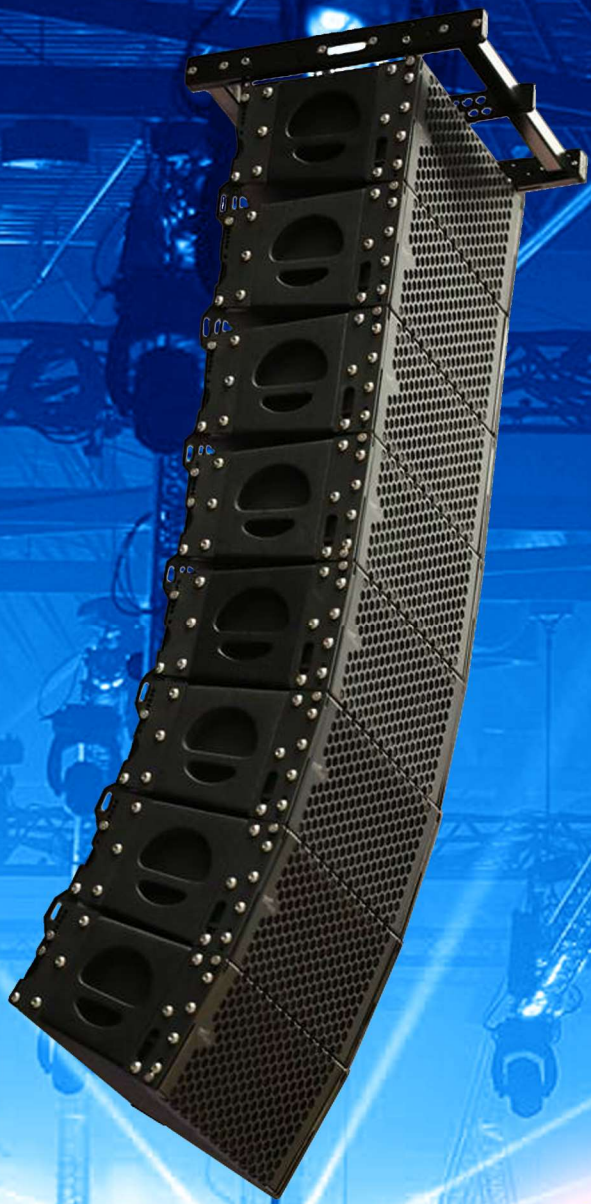


W&dB



# Vento Bonsai®







## BONSAI

The Bonsai is the first Line Array system reduced to scale with all miniature details. This system has been designed for installations and PA.



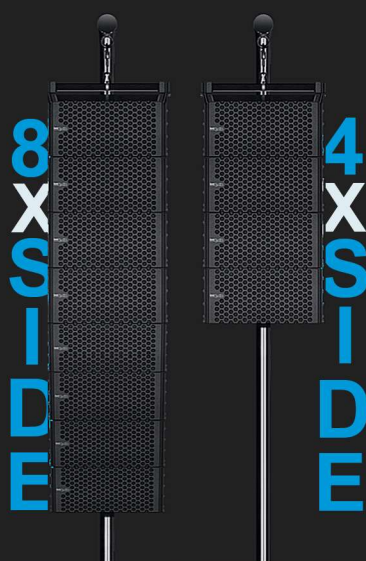
### OUTSTANDING SPL

The Bonsai consists of four units in its basic format with a total power of 240 W AES. These speakers reproduce frequencies from 150 Hz to 20 kHz. With a very high SPL for its size.



### MULTIUSE

The Bonsai allows to install a Line Array system equal to a real size system for example, in a bar, in a fashion store or in a house. It can also be used as a PA system for a club and small outdoor venues. It has all the benefits of a true Line Array system.



## HIG QUALITY MATERIALS

All materials are selected to ensure the highest possible quality.



CERTIFIED METAL



BIRCH PLYWOOD



HIGH RESISTANCE FINISH



## TECHNICAL DATA

Transducers	2 x 3"
Coverage	60° AXI
Nominal impedance	16Ω
Power AES	60 W x unit
Maximun Peak SPL	119 dB SPL
Frecuency Range	150 Hz to 20 kHz
Sensibility (1 W@ 1m)	1 w @ 1m:94 dB
Weigth	1.9 Kg.
Enclosure Geometry	Trapezoidal
Angle adjustment	1° x 1°
Dimensions (WxHxD)	197 x 93 x 130 mm.
Enclosure Material	Birch Plywood
Rigging	Steel
Finish	Polyurethane/ Polyurea
Colour	Black and other colors
Connections	2xBNC



# BON SAI





## ELETRONICS

The Bonsai has a complete amplifier and DSP solution, along with a user and manufacturer software control.



## SUBWOOFER SYSTEM

The Bonsai has two self-powered direct radiation subwoofer system options.

- SB18A Direct radiation 18" subwoofer system in symmetrical load.
- Three channels. One channel of 1500 W and two channels of 800 W at four ohms.
- It incorporates an 18" speaker (long excursion) high power and high sensitivity.
- SB15A Direct radiation 15" subwoofer system in symmetrical load.
- Two channels. One channel of 1500 W and one channel of 800 W at four ohms.
- It incorporates an 15" speaker (long excursion) high power and high sensitivity.



SW  
UO  
BO  
FER





The Vento Bonsai at La Coruña city venue, here you can appreciate its small size.

As we can see in the picture above the Bonsai System being used at a live venue. Very nice surroundings at La Coruña city port and people enjoying the excellent sound quality of the band reproduced by the Bonsai System.





The Vento Bonsai being used in a indoor venue in Argentina by the famous artist Angela Leiva

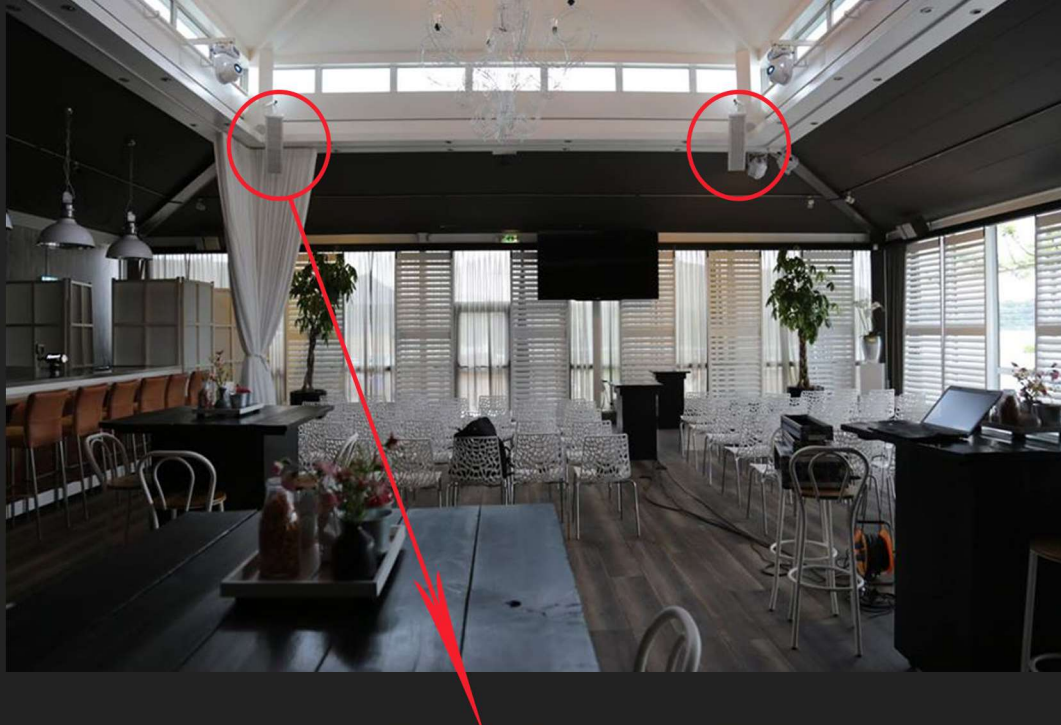
Bonsai is also a excellent system for indoor live venues and use in concert halls. Due to its reduced size it has virtually no visual impact. That's why it has been introduced by the Italian RAI television company at their television recording studios.



The Vento Bonsai being installed for a indoor venue in Lisbon for the famous Rock in Rio venue.

The Bonsai System due to its exelet sound quality high SPL can be used by rock bands and for any other music genere concerts. Its a favourite of DJs.





The Bonsai system is the first Line Array system that can be installed in a club in a discreet way, so manageable that even a child can transport it, eight units can be moved perfectly by an adult.

The Bonsai System and its versatility allows it to be configured and used for any location where music quality and definition is a priority.



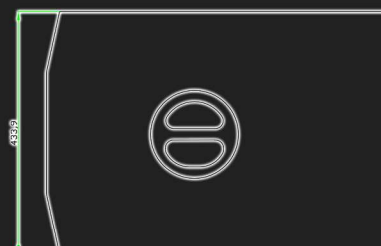
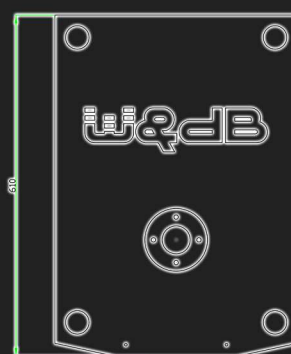
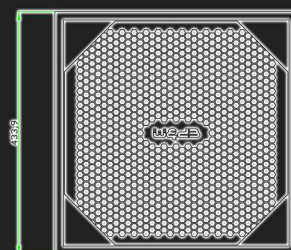


### BONSAI SB15 A

- Self-powered direct radiation subwoofer system.
- Incorporates a 15" speaker strong magnetic field and good thermal cooling.
- Bass-Reflex system. Made from Birch multi layer board, finished in high resistance polyurea paint.

## TECHNICAL DATA

Transducers	1 x 15"
Coverage	-
Nominal impedance	8 $\Omega$
Power AES	1500 W / 800 + 800 W
Maximun Peak SPL	129 dB SPL
Frecuency Range	35 Hz to 150 Hz
Sensibility (1 W@ 1m)	1 w @ 1m:100 dB
Weigth	38 Kg.
Enclosure Geometry	Rectangular
Angle adjustment	-
Dimensions (WxHxD)	434 x 434 x 610 mm.
Enclosure Material	Birch Plywood 15 mm.
Rigging	M 20/ Special tube
Finish	Polyurethane/ Polyurea
Colour	Black and other colors
Connections	Power Module/ P-com





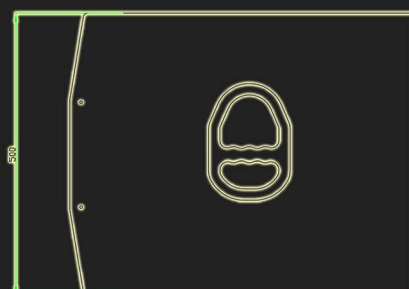
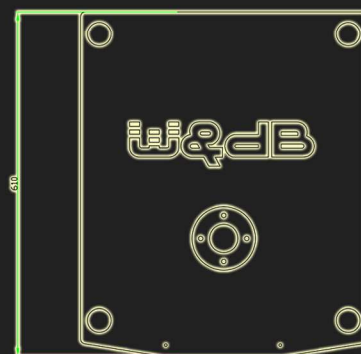
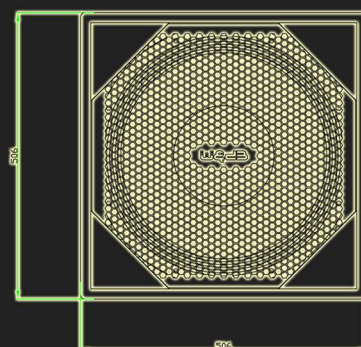
BONSÁI SB 18 A

### BONSÁI SB18 A

- Self-powered direct radiation subwoofer system.
- Incorporates a 18" speaker strong magnetic field and good thermal cooling.
- Bass-Reflex system. Made from Birch multi layer board, finished in high resistance polyurea paint.

## TECHNICAL DATA

Transducers	1 x 18"
Coverage	-
Nominal impedance	8 Ω
Power AES	1500 W/ 800+ 800 W
Maximun Peak SPL	131 dB SPL
Frecuency Range	35 Hz to 150 Hz
Sensibility (1 W@ 1m)	1 w @ 1m:104 dB
Weigth	45 Kg.
Enclosure Geometry	Rectangular
Angle adjustment	-
Dimensions (WxHxD)	506 x 506 x 610 mm.
Enclosure Material	Birch Plywood 18 mm.
Rigging	M 20/ Special tube
Finish	Polyurethane/ Polyurea
Colour	Black and other colors
Connections	Power Module/ P-com







Bonsai System

Bonsái Sub SB15 A

The Bonsai system offers four subwoofer configurations, one 15" self-powered, 18" self-powered and two passive 15" and 18".

Both models incorporate a POWER SOFT class D amplifier with a four-channel DSP. A three channel amplifier is used with a group of eight cabinets while a two channel amplifier is used for a group of four.

The amplifier module is equipped with third-generation Class D technology and energy efficient switching power supply. With high output power, it incorporates three channels one 1500 W into 8 ohms and another two 800 W into 4 ohms. Amplifiers are controlled by a DSP. Excellent audio features are available to enable even the most demanding solutions. Multiple modules can be connected via a serial bus system with the associated PC software 'NetControl'. Real time management via this network is available.

#### Equipment: SB15A

- 2 analog inputs, balanced, XLR,
- 1 Speakon NL4 power output for four units of Vento Bonsai.
- 1 Speakon NL4 power output for passive subwoofer.
- 1 AES3 input, multiplex with analog input.
- High power density (0.85W / cm<sup>3</sup>) 1500W + 2 x 800W into 4 ohms.
- DSP with 96 kHz internal sampling and 40-bit floating point technology.
- 1 selection encoder.
- 4 storable presets and selectable directly via encoder
- Ethernet 10/100 MBit.
- IIR-EQ of 15 bands, adjustable frequency, gain and quality.
- Delay, up to 400 ms.
- FIR filter with up to 2048 coefficients.
- IIR-EQ of 10 bands, adjustable frequency, gain and quality.
- Adjustable RMS -Limiter, threshold, attack, release.





Bonsai System

Bonsái Sub SB18 A

The Bonsai system offers four subwoofer configurations, one 15" self-powered, 18" self-powered and two passive 15" and 18".

Both models incorporate a POWER SOFT class D amplifier with a three-channel DSP. A three channel amplifier is used with a group of eight cabinets while a two channel amplifier is used for a group of four.

The amplifier module is equipped with third-generation Class D technology and energy efficient switching power supply. With high output power, it incorporates three channels one 1500 W into 4 ohms and another two 800 W into 4 ohms. Amplifiers are controlled by a DSP. Excellent audio features are available to enable even the most demanding solutions. Multiple modules can be connected via a serial bus system with the associated PC software 'NetControl'. Real time management via this network is available.

#### Equipment: SB18A

- 2 analog inputs, balanced, XLR,
- 1 Speakon NL4 power output for four units of Vento Bonsai.
- 1 Speakon NL4 power output for passive subwoofer.
- 1 AES3 input, multiplex with analog input.
- High power density (0.85W / cm<sup>3</sup>) 1500W into 8 ohms + 800W + 800W into 4 ohms.
- DSP with 96 kHz internal sampling and 40-bit floating point technology.
- 1 selection encoder.
- 4 storable presets and selectable directly via encoder
- Ethernet 10/100 MBit.
- IIR-EQ of 15 bands, adjustable frequency, gain and quality.
- Delay, up to 400 ms.
- FIR filter with up to 2048 coefficients.
- IIR-EQ of 10 bands, adjustable frequency, gain and quality.
- Adjustable RMS -Limiter, threshold, attack, release.





RMS 125,04 dB  
PEAK 128,05 dB

RMS 119,02 dB  
PEAK 122,03 dB

RMS 115,50 dB  
PEAK 118,51 dB

RMS 113,00 dB  
PEAK 116,01 dB

RMS 111,06 dB  
PEAK 114,07 dB

RMS 109,48 dB  
PEAK 112,49 dB

5 m.

10 m.

15 m.

20 m.

25 m.

30 m.

30 m.

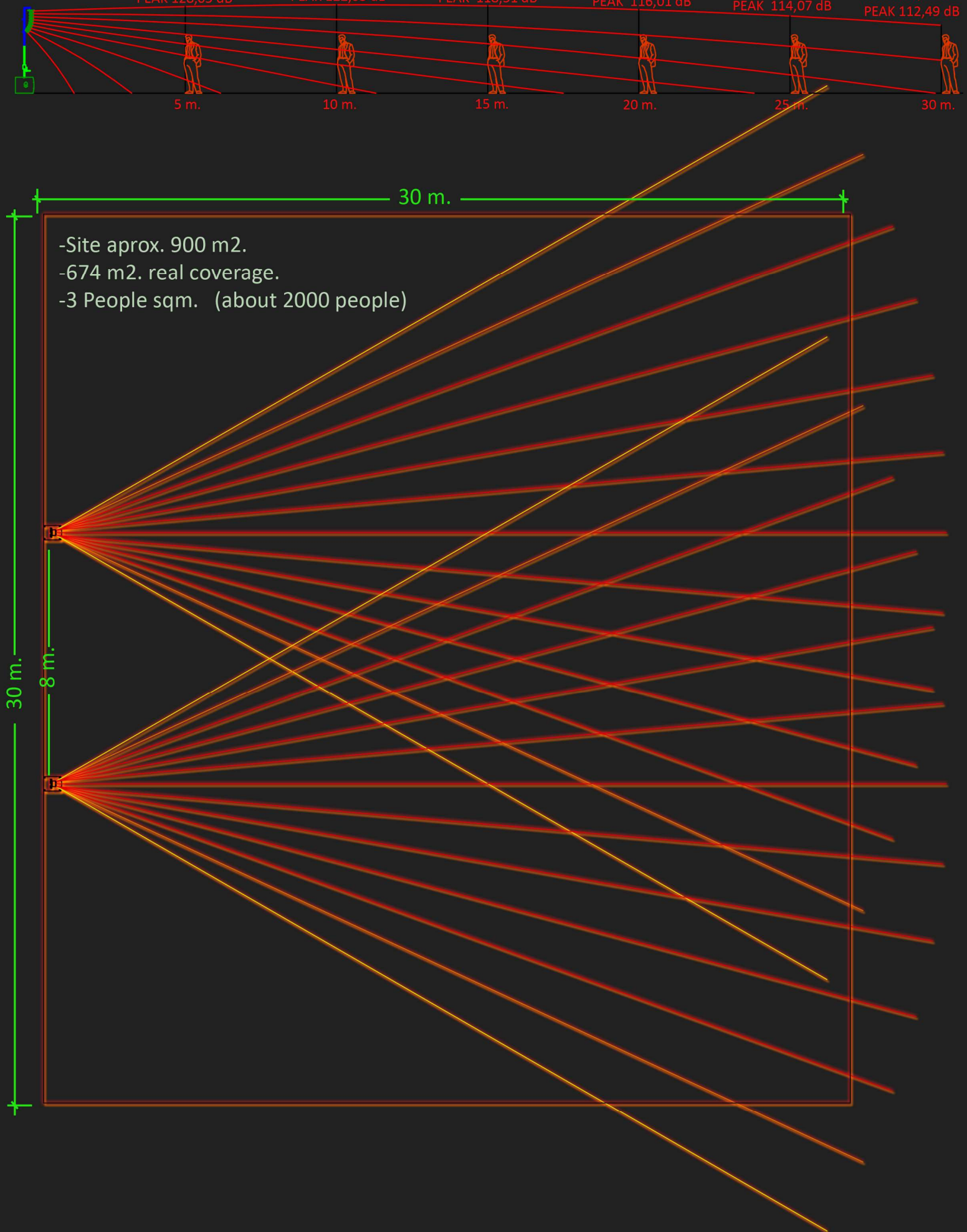
-Site aprox. 900 m<sup>2</sup>.

-674 m<sup>2</sup>. real coverage.

-3 People sqm. (about 2000 people)

8 m.

30 m.







**W&dB**

Headquarters & Factory Europe:  
Plig. IND. A Pasaxe-Vincios 24/26  
36.316 Vincios-Gondomar  
Vigo-Galicia Spain  
Telf: +34 886 114 402  
wdb@wdb-audio.com

W&dB USA:  
3510 NW, 115 Ave Doral,  
USA Fl 33178  
+1 (305) 407 9193  
USA@wdb.audio

Headquarters Hispanoamérica:  
Álvarez Thomas 198, Piso 5B  
Buenos Aires-Argentina- C1427CCO  
+54 (11) 5218 8000  
hispanoamerica@wdb.audio

[www.wdb-audio.com](http://www.wdb-audio.com) <http://www.facebook.com/WDBaudio>